

# SNC-VB630

Network Fixed Full HD Camera – V Series

**SONY**  
make.believe

## Box-type 1080p/60fps Full HD Camera Powered by IPELA ENGINE™ Technology

- Maximum resolution of 1920 x 1080 pixels with the Exmor™ CMOS sensor
- High Frame rate of 60 fps and three simultaneous streams
- Extremely Wide Dynamic Range to 90dB achieved with View-DR technology
- New video analytics functions including face detection and object removal/left behind
- H.264 (High/Main/Baseline Profile) /JPEG video codecs and AAC (16 kHz/48 kHz)/G.726/G.711 audio codecs
- Minimum illumination of 0.1 lx in Color and 0.07 lx in B/W (50 IRE @ 1/30 sec)

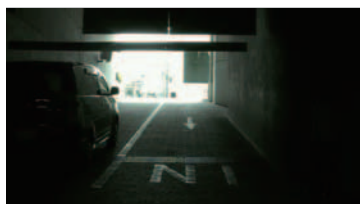


### KEY FEATURES

- IPELA ENGINE EX signal processing system developed based on Sony's unique signal processing and video analytics technologies to provide unique features such as a high frame rate, View-DR, XDNR™, and DEPA™ Advanced technologies
- High frame rate of 60 fps to provide smoother and less blurry moving pictures
- View-DR – Sony's innovative wide dynamic range technology – to capture objects clearly and adaptively even under very harsh, severe backlight or highlight conditions

**IPELA**  
ENGINE EX

**View-DR**



OFF



ON

Actual Images

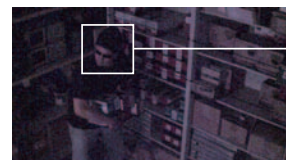
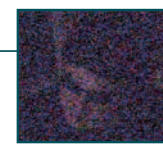
- Visibility Enhancer (VE) to optimize the brightness and color reproduction of an image dynamically on a pixel-by-pixel basis while continuously adapting to the scene within the given dynamic range
- DEPA Advanced Intelligent Video Analytics to trigger an alarm based on user-defined rules
- True D/N (Day/Night) function to switch to Day or Night mode depending on the light level
- SD memory card slot for an on-board recording capability<sup>1</sup>



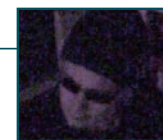
- XDNR (eXcellent Dynamic Noise Reduction) technology for clear images with virtually no motion blur under low illumination



OFF



ON



Actual Images

- Built-in HTML viewer compatible with most Smartphones
- Easy Focus - allows installer/user to focus the camera remotely using a PC or locally
- Powered by either PoE (IEEE 802.3af-compliant), AC 24 V ±20%, or DC 12 V ±10% for easy installation
- ONVIF™ (Open Network Video Interface Forum) Profile S conformance software that ensures greater interoperability and more flexibility in building multiple-vendor systems
- VBR (variable bitrate) or CBR (constant bitrate) encoding format selectable to correspond with various network conditions
- Easy initial network settings with supplied SNC Easy IP Setup Guide application



<sup>1</sup> Data recorded on an SD memory card (sold separately) may be lost or damaged by data access during power-off, mechanical shock, memory card detachment, or other operations. Data loss or damage can also occur when a memory card reaches end of life, which varies according to operational conditions. No guarantee is given against damage (including passive damage). The on-board recording function, the intelligent motion detection function and the tamper alarm function cannot be used simultaneously.

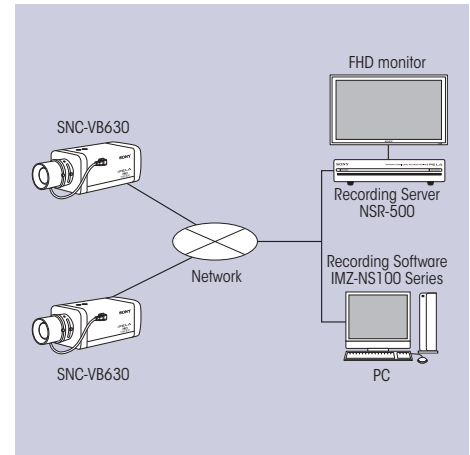
**IPELA**™

# SPECIFICATIONS

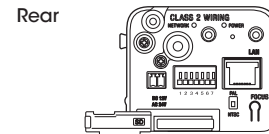
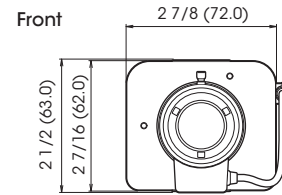
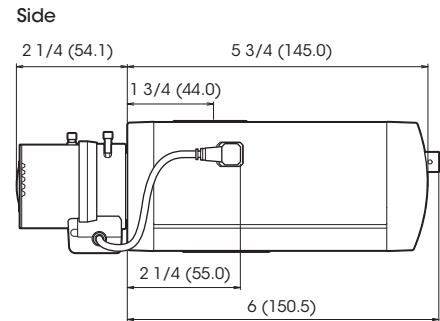
SNC-VB630	
<b>Camera</b>	
Image Sensor	1/2.9-type progressive scan Exmor CMOS sensor
Image Sensor (Number of Effective Pixels)	Approx. 2.14 Megapixels
Signal System	NTSC color system
Minimum Illumination (50 IRE)	Color: 0.1 lx (F1.2, View-DR OFF, VE OFF, AGC ON, 1/30 s, 30 fps) B/W: 0.07 lx (F1.2, View-DR OFF, VE OFF, AGC ON, 1/30 s, 30 fps)
Minimum Illumination (30 IRE)	Color: 0.06 lx (F1.2, View-DR OFF, VE OFF, AGC ON, 1/30 s, 30 fps) B/W: 0.05 lx (F1.2, View-DR OFF, VE OFF, AGC ON, 1/30 s, 30 fps)
Dynamic Range	Equivalent to 90 dB with View-DR technology
S/N Ratio	More than 50 dB (Gain 0 dB)
Gain	Auto
Shutter Speed	1/1 s to 1/10000 s
Sync System	Internal synchronization
Exposure Control	Exposure compensation, AGC, Shutter speed, Iris
White Balance	AW, ATW-PRO, Fluorescent lamp, Mercury lamp, Sodium vapor lamp, Metal halide lamp, White LED, One push WB, Manual
Lens	CS mount vari-focal lens
Zoom Ratio	Optical zoom 2.9x, Digital zoom 2x
Powered Focus	Yes (Easy Focus)
Horizontal Viewing Angle	114.2° to 40.0°
Vertical Viewing Angle	60.6° to 22.5°
Focal Length	f = 2.8 mm to 8.0 mm
F-Number	F1.2 (Wide) to F1.95 (Tele)
Minimum Object Distance	300 mm
Horizontal Resolution	700 TV lines (analog video)**1
Preset Position	8
Tour	5
<b>Camera Features</b>	
Day/Night	Yes
Wide-D	Yes (View-DR)
Image Enhancement	Visibility Enhancer (VE)
Image Stabilizer	Yes **4
Noise Reduction	XDNR technology
<b>Image</b>	
Codec Image Size (H x V)	1920 x 1080, 1280 x 720, 1024 x 576, 720 x 576, 720 x 480, 704 x 576, 640 x 480, 640 x 360, 352 x 288, 320 x 180 (H.264, JPEG)
Video Compression Format	H.264 (High/Main/Baseline Profile), JPEG
Codec Streaming Capability	Triple Streaming**2, CBR/VBR (selectable)
Maximum Frame Rate	H.264: 60 fps (1920 x 1080) JPEG: 60 fps (1920 x 720)
<b>Audio</b>	
Audio Compression Format	G.711/G.726/AAC (16 kHz, 48 kHz)
<b>Scene Analytics</b>	
Intelligent Motion Detection	Yes
Face Detection	Yes**3
Rule-based Filter	DEPA Advanced
<b>Network</b>	
Protocols	IPv4, TCP, UDP, ARP, ICMP, IGMP, HTTP, DHCP, DNS, NTP, RTP/RTCP, RTSP, SNMP (MIB-2), IPv6**3, HTTPS**3, SNMP
ONVIF Conformance	Yes (Profile S)**3
Number of Clients	20
Authentication	IEEE 802.1X
<b>Interface</b>	
Analog Video Output	BNC x1, 1.0 Vp-p, 75 Ω, unbalance, sync negative
Line Input	Mini jack (monaural)
Line Output	Mini jack (monaural), Maximum output level: 1 Vrms
Network Port	10BASE-1/100BASE-TX (RJ-45)
Sensor Input	x2, make contact, break contact
Alarm Output	x2, 24 V AC/DC, 1 A (mechanical relay outputs electrically isolated from the camera)
Microphone Input	Mini jack (monaural)
Card Slots	SD Card x1
<b>System Requirements</b>	
Operating System	Windows® XP (32 bit) Professional Edition Windows Vista® (32 bit) Ultimate, Business Edition Windows 7 (32/64 bit) Ultimate, Professional Edition
Processor	Intel Core i7 2.8 GHz or higher
Memory	2 GB or more
Web Browser	Microsoft Internet Explorer® Ver. 7.0, Ver. 8.0, Ver. 9.0 Firefox® Ver. 3.5 (Plug-in free viewer only) Safari® Ver. 4.0 (Plug-in free viewer only) Google Chrome™ Ver. 4.0 (Plug-in free viewer only)
<b>General</b>	
Power Requirements	PoE system (IEEE 802.3af compliant), DC 12 V ± 10%, AC 24 V ± 20%
Power Consumption	6.0 W max.
Operating Temperature	14°F to 122°F (-10°C to +50°C)
Startling Temperature	32°F to 122°F (0°C to 50°C)
Storage Temperature	-4°F to +140°F (-20°C to +60°C)
Operating Humidity	20% to 80%
Storage Humidity	20% to 95%
Dimensions (W x H x D)	2 7/8 inches x 2 1/2 inches x 5 3/4 inches (72 mm x 63 mm x 145 mm) (without lens) 2 7/8 x 2 1/2 x 7 7/8 inches (72 mm x 63 mm x 197 mm) (with lens)
Weight	Approx. 1 lb 4 oz (565 g) (with lens)
Safety Regulations	JATE Technical standard (LAN) UL2044, IEC60950-1 (CB) VCCI (Class A), FCC (Class A), IC (Class A) Emission: EN55022 (Class A) + EN50130-4 Immunity: EN55022 (Class A) + EN55024 Emission: AS/NZS CISPR22 (Class A)
Supplied Accessories	CD-ROM (supplied programs) (1), Installation manual (1), Wire rope (1), Screw M4 (1), DC 12V/AC 24V connector (1), Safety regulations (1)

\*\*1 Monitor display ratio 4:3  
\*\*2 Triple streaming (any combination with JPEG/H.264, including multiple streams of the same format)  
\*\*3 Version 1.4 or later  
\*\*4 Default setting: OFF

# SYSTEM CONFIGURATION



# DIMENSIONS



Unit: inches (mm)